

LED Lights at Central Utility Plant



PROJECT COMPLETION

February 19th, 2014

ENERGY SYSTEM

Interior Lighting

ADDRESS

3255 Elmbank Road

PROJECT DESCRIPTION

The following project includes the replacement of 1000 W Pulse Start Metal Halide's with 500 W Light-Emitting Diode's including occupancy sensors to achieve a 64% reduction in electrical demand. The occupant motion sensors included are integrated into the fixture to minimize lighting energy consumption when spaces are unoccupied. Adapting LED technologies into high bay applications are relatively new. Along with the energy savings, the CUP lighting project, is meant to demonstrate the capability and true application of replacing High Bay Metal Halide's with LED's.

USER TESTIMONIAL

Socrates Furtatado
Plant Operator

The Lights are quite bright and they provide adequate lighting for the operation and maintenance of the equipment in the facility. The motion sensors in the passages are also quite effective.

Percentage of Annual Savings

64%

Electricity Usage Before (5 Years)

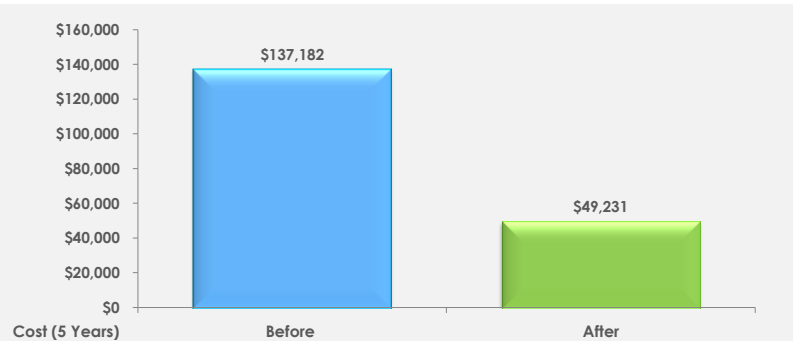
\$137,182

Electricity Usage After (5 Years)

\$49,231

Anticipated Savings (5 Years)

\$87,950



Equivalent to carbon sequestered by **6.8** acres of forests annually



Equivalent to **16,693** Liters of gasoline consumed over 5 years